

Introduction to imagePROGRAF Printer with Colortrac Scanning System



**imagePROGRAF iPF700 PRINTER
WITH COLORTRAC SCANNER SYSTEM**

Introduction

Unique features set the imagePROGRAF with Colortrac Scanning System apart from other systems. This guide will discuss the features and benefits of this system as well as some of the markets the product is used in along with the applications of these markets.

Canon presents a new, powerful scanning workflow solution with the introduction of the imagePROGRAF with Colortrac Scanning System. This integrated system is ideal for users wishing to archive, email, or copy large-format prints. This product can be incorporated into a variety of markets including CAD, AEC, and GIS, and can be used for countless applications such as maps, blueprints, photographs, drawings, court documents, newsprint, etc. Together with an imagePROGRAF printer, this Scan-Copy-Print Solution can scan color or black & white documents up to 40 inches wide at high speeds with great accuracy, at an exceptional value.

This guide will focus on the imagePROGRAF iPF700 with Colortrac Scanning System, as the iPF700 features are well suited to meet the needs of the intended markets for this system. Canon and Colortrac deliver an evolutionary product that can be customized to meet the needs of the client today and re-engineered to meet the changing demands of the growing business tomorrow.

This application guide is designed to help you become aware of all the possibilities you have with the imagePROGRAF iPF700 with Colortrac Scanning System. Our goal is to enable you to understand the equipment to maximize its' potential for you and your customer.





What Comes in the Box?

To make the best use of the imagePROGRAF iPF700 with Colortrac Scanning System, it is important to understand all the components that are included with the system.

The Scanner

One of the fastest archiving solutions available on the market, the Colortrac CX40 is an incredibly unique machine. With the ability to scan full color documents up to 40 inches wide and .08 inches thick, at 3.36 inches per second, the Colortrac CX40 marries speed and size in one device. The CX40 can even scan monochrome documents at a rate of 10.1 inches per second, rivaling the speed of expensive LED equipment—which could cost you more than \$100,000 for a purely monochrome solution. The CX40 brings high quality color to the table, along with the ability to scan-to-print, archive, file, and e-mail. Employing a resolution of 600dpi optical, with enhancement up to 3600dpi, this is more than a traditional scanner. This is a “Digital Gateway” for wide format communications.



The Printer - imagePROGRAF iPF700*

The imagePROGRAF iPF700 36" printer is designed with the CAD and corporate user in mind. This printer is an ideal solution for the AEC, CAD, GIS, archive, reproduction and office markets. With new technological advances, the ability to quickly and accurately create Maps, Design Layouts, Posters, and more, has never been easier. This innovative device employs a new 5-color dye/pigment ink system that has cyan, magenta, yellow and black dye ink and two channels of pigment matte black. The ink system gives the user text that is very sharp, line drawings that are very clear and posters that have bold dynamic color.

The innovations that were incorporated into this printer satisfy the many needs of the markets they are used in. The L-COA image processor is dedicated to the imagePROGRAF and is exclusively designed to drive the best quality output at the highest possible speeds. The new ink system consists of four dye color inks and a 2-channel matte black pigment ink. Doubling the matte black is used for maximum black density and speed. Another key feature of this device is the new high-density 1" print head that increases the speed of printing and improves durability. The print head packs in over 15,000 nozzles, which increases the accuracy of the device, as well as the consistency of the output.

*Available with other imagePROGRAF printers



The Stand

This stand ties the CX40 scanner together with the imagePROGRAF iPF700 printer. It's designed to house the server and mount the screen and keyboard for easy access to all controls. Height adjustable and easily movable, the stand makes it easy for users to work with the system. With complete control of the imagePROGRAF iPF700 with Colortrac Scanning System from a single work position, the Stand maximizes productivity.

The Workstation

A state of the art server, matched to the high performance of both the scanner and printer, maximizes the system for a complete reprographic solution. The Dell Computer Box comes with the computer, keyboard, mouse, power cable, and 17" flat panel display with power cable Dongle. Using Hyper Threading technology, the server can allow uninterrupted scanning while running the printer or any other applications.

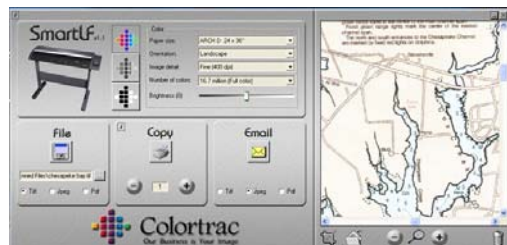
The Software

Unlike other systems, the Canon imagePROGRAF iPF700 with Colortrac Scanning System allows you to protect your investment as your business grows, delivering a complete evolutionary system that answers more applications for the customer than any other device. The system includes a suite of software bundled with the System.

Software included with Scanner:

Colortrac Smart LF: This "ready to run" software is easy to use and designed for operation by a novice user. Select the File, Copy, or E-mail function the type of file to be scanned, and a few other intuitive settings. Then place the original in the scanner and off it goes.

CopySmart: This software creates a multifunction scan/copy/print system, maximizing investment and the utilization of the equipment. CopySmart has a graphical user interface that adopts a "big button" philosophy with which current Canon office equipment users will be familiar.



Smart LF interface



CopySmart interface



Software included with Printer:

PosterArtist (PC Only): This template driven software was developed by Canon specifically to create large-format posters easily. PosterArtist helps users of all levels to create professional looking posters, banners and signage with extreme ease. This application offers a variety of templates, hi-res royalty-free images and clipart designed to target a wide array of markets such as food service, education, offices, retail and much more. (All imagePROGRAF models)



HDI Driver: Canon includes a direct interface for AutoCAD in the box with every iPF700 printer. This true Heidi driver allows the user to print directly to the device via AutoCAD. Users can expect sharp line renderings, accurate pen widths, crisp corners and intersections and much more when printing through this professional HDI driver. This driver creates a vector graphical representation of the printed data. Here points are defined and a curved line is calculated mathematically in order to achieve precision. (imagePROGRAF iPF500/600/700 and W6400 models)

Canon Printer Driver: This Windows® and Macintosh® driver incorporates advanced black and white control, simplified page setup options, 1-touch borderless printing, expanded color settings, and much more into a printer driver that is intuitive and easy to operate, but still gives even the most advanced users the tools needed to stay productive. For Windows users, the free-layout feature enables nesting and custom layouts of images or files of nearly any type. (All imagePROGRAF models)

PhotoPRINT Select RIP: Efficiently manage workflow and production of high-end graphics and technical documents. Includes PostScript® Level 3 and HPGL/HPGL-2 support (iPF700 and W6400 Only). This user-friendly front-end software which comes with the iPF700 has Postscript Level 3 capabilities, easy drag-and-drop printing, impressive nesting functions, accurate print preview features and a fully licensed Pantone color library. PhotoPRINT Select is supported by both Windows and Macintosh operating systems. For a full list of supported file types, please see the product brochure. (imagePROGRAF iPF700 and W6400)





Applications

The wide spectrum of applications that can be addressed with the imagePROGRAF iPF700 Colortrac Scanning System.

The imagePROGRAF iPF700 with Colortrac Scanning System allows you to address more opportunities with one device than any other. This guide is not all inclusive but is intended to point out many of the opportunities.

Scan-to-File/Scan-to-Archive: The Colortrac Scanner is one of the most productive scanners available today. With the CX40, you can digitally file, store, and secure all your plans, records, blueprints, drawings, and documents. Archive scanning is possible at resolutions from 100 to 3600dpi. In addition, the ISIS driver allows you to deliver scanned data in various formats and industry standards. Market opportunities exist in manufacturing and utility companies, as well as government agencies that scan files to avoid loss of data. More and more companies today have demonstrated the need for digital back-ups of hard copy documents. Similar applications include:

- Scan to file in TIFF or PDF

Scan-to-Print/Scan-to-Copy: This Scan-Copy-Print Solution can scan to print color or black & white documents up to 40 inches wide at high speeds with great accuracy, at an exceptional value. Documents with color renderings can be scanned and used to output high speed, high quality reproductions. Color maps and photo composite drawings will reproduce with clarity. Engineering drawings can be reproduced on bond paper at low costs, competitive with LED devices, which output in black and white only. Customers today want more than just monochrome output, they want color.

Scan-to-E-mail: This Scan-to-E-mail Solution can scan in a document at a company's headquarters, and immediately e-mail the file to an offsite location with a click of a button.

Industries/Market: Color users are becoming a vast community, creating several market opportunities for this Scan-File-Copy-Print Solution, including:

- Architectural, Engineering, and Construction
- Geographical Information Systems (GIS)
- Computer Aided Design



- Mapping for Civil Engineers
- State and Local Government Agencies
- Design Departments
- Manufacturing and Utility companies
- Educational Institutions
- Facility Management Departments

PosterArtist Applications: The imagePROGRAF iPF700 with Colortrac Scanning System comes with PosterArtist, a template driven software developed by Canon specifically to create large-format posters easily. PosterArtist helps users of all levels to create professional looking posters, banners and signage with extreme ease. This application offers a variety of templates, hi-res royalty-free images and clipart designed to target a wide array of markets such as educational institutions, professional businesses, retail, and much more:

Educational Institutions: Posters can be used for class room signage, fund raising, event planning, and many other applications. Maps, charts, calendars, and other teaching aids facilitate learning in the class room, while banners promoting school plays, sporting events, and science fairs generate interest in extracurricular activities. Signage material advertising athletic and music boosters as well as organizations-such as the PTA-help increase fund raising for the school and increase revenue.

Retail: Posters can be used to increase revenue through advertising at point of purchase displays, booths for trade shows and other events, window displays, and other high traffic areas.

Professional: PosterArtist can be used by legal firms for court room purposes, using posters to exhibit enlarged digital photos for evidence. Similar applications can be used for other professional businesses.



3rd Grade Class Timetable

	Mon	Tue	Wed	Thu	Fri
Subject 1	Math	Art	Science	Music	Art
Subject 2	Reading	Spelling	Reading	History	Spelling
Break	Break	Break	Break	Break	Break
Subject 3	Music	Sports	Art	Math	Science
Subject 4	Music	Sports	Music	Sports	Reading





Media: Using different substrates allows you to expand the use of your Multifunction Printer (MFP) to address a multitude of applications. Using materials approved for your printer enables you to output desired results. The following represents some of the materials currently available:

- **Backlit Film:** This media is produced to be mounted in displays with light shining through from a rear mounted source. This is commonly used in lobby signs, window displays, supermarkets, malls, tradeshows, casinos, subways, and other high traffic areas that sell ad space or use it to promote products.
- **Banner Materials:** Special composition material that can be used with ink jet printers that is durable enough to have grommets installed for hanging. These are commonly used as temporary displays for event promotions, ceiling displays, backdrops, tradeshows, supermarkets, and grand openings.
- **PSV (Pressure Sensitive Vinyl):** Adhesive backed material used in many Point of Purchase applications. Floor graphics are a common use of PSV. Perforated PSV is used in window graphics on vehicles for advertising business or personalization.
- **Vellum:** Vellum offers exceptional reproduction in monochrome. Excellent for Diazo masters, final plots, pen plots and file copy drawings.
- **Economy Bond Paper:** Economy Bond Paper is an inexpensive paper designed to maximize your profits. Use for presentations, production prints, microfilming and pen plotting.
- **Coated Paper:** Coated paper is also relatively inexpensive, increasing your profitability. It has a smooth surface for crisp, clear ink acceptance and superior image quality.

Summary

The Canon imagePROGRAF with Colortrac Scanning system

- Exceptional Value- Includes not only the hardware but also provides software as well
- User Friendly- Very easy to use and operate, low maintenance required
- Outstanding Speed- Scan color documents up to 3.36 in/s and black and white documents up to 10/in. Print documents on Plain Paper up to 585 sfph.
- HDI Driver- Comes standard with the device for direct and accurate printing from AutoCAD
- User Intuitive Software- Included for both beginner and advanced users
- Great Media Handling- Handles a variety of substrates including flimsy tissue, creased maps, and thick cards
- Captures Fine Details- Scans at 600 dpi focus Contact Image Sensors for fine image details, sharpness, and accuracy. Prints with 4 picoliter droplet ink, over 15,000 nozzles in print head for fine line and accurate reproduction of original

