

SII 

Teriostar

**LP-1010 Series
Digital Wide-Format
Network Printers**





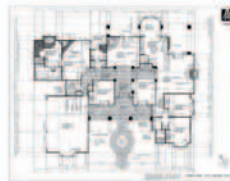
High Speed 600 dpi Networked Printing



HIGH PRODUCTIVITY

3.4 E-size/minute
6.2 D-size/minute

Our high-performance controller with simultaneous parallel data processing provides high speed output, even during continuous printing of different sizes.



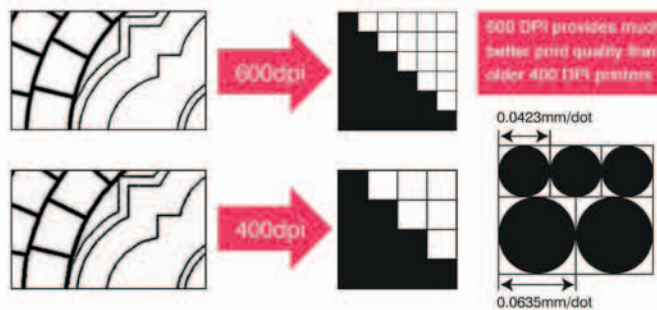
Output Conditions
Sample Image: AutoCAD Living room A1
Data size: HP-GL/2 approxi. 855kb
Computer: Celeron 800Mhz, 192MB memory
OS: Windows 2000 SP3
Data Transfer: FTP



■ Time required for continuous 5 prints through Ethernet, FTP Transfer

HIGH RESOLUTION 600 DPI

The combination of 600 DPI and a single developer unit delivers superb density and excellent line acuity. Accurate copies and prints to-scale are assured with true 600 dpi printing.



LONG PRINT LENGTHS

Long prints support applications such as automotive, shipbuilding, civil engineering, bridge building, military, and energy/industrial sites.

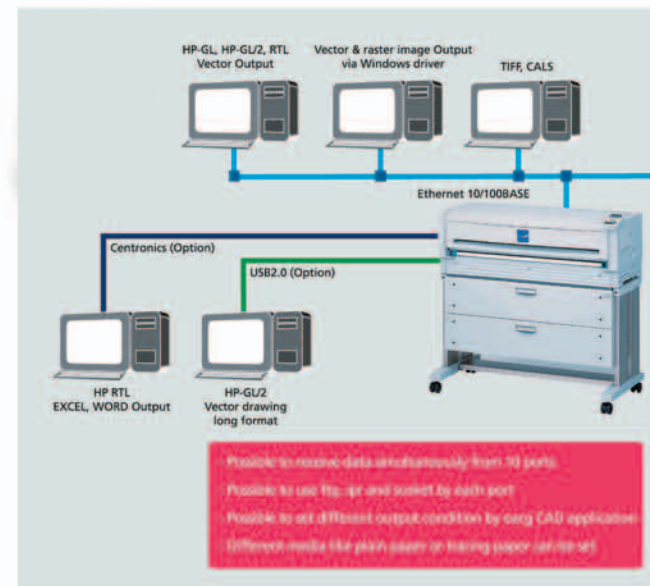


NETWORK INTERFACES

Interfaces supported include Ethernet (100Base-TX and 10Base-T), USB-2 and Centronics. All interfaces can receive data simultaneously.

PRINTER LANGUAGE SUPPORT

Compatible with HP-GL, HP-GL/2, HP-RTL, TIFF, and CALS.



WINDOWS DRIVER

Includes a Windows driver that allows you to print from any application.



WEB-BASED PRINTER CONTROL

Full printer control over the network using a standard web browser. Set up passwords for different levels of access and control

AUTOMATIC ROLL SELECTION

Choose between two different paper sizes, or let the LP-1010 automatically select the appropriate paper size for your drawing. Switching from one paper size to another is fully automated with the LP-1010's paper feeding system. Paper rolls up to 36" wide are supported.

EASY-TO-USE LARGE DISPLAY

The LP-1010 offers a large display which provides excellent visibility and easy operation of the entire printer. Allows you to change parameters quickly. Store up to 10 user-settings in memory.



CLEAN & EASY TONER REPLACEMENT

Toner cartridges use a containment system that prevents accidental toner spills - fast, easy, and clean.



Fast Print Speeds

3.4 E-size Prints/min.
6.2 D-Size Prints/min.

UP TO 20 CONTINUOUS COPIES

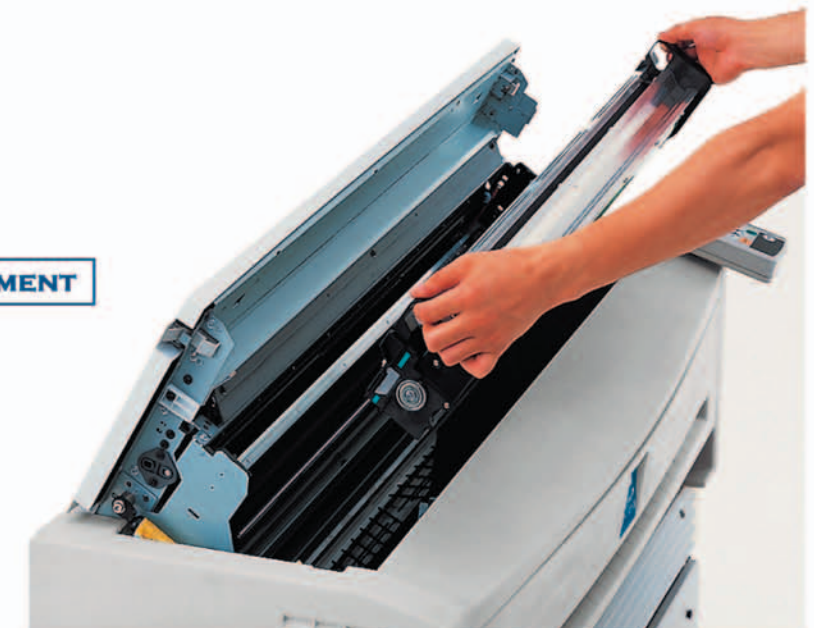
Make up to 20 continuous prints from any file without resending. Printer includes a 20 GB hard drive and 256 MB of RAM memory to keep your print queue working flawlessly.

SHEET FEEDING

Feeding all types of media sheets into the printer is simple with the built-in, fold-down loading tray.

USER-REPLACEABLE DRUM - LOWER SERVICE COSTS

The industry's first easy-to-replace photo cartridge drum in a wide-format LED printer allows you to replace your own photo drum - no service call required - just like a desktop laser printer! This dramatically lowers your ownership costs, lowers cost-per-copy costs, and reduces downtime.





LP-1010 Series Digital Wide-Format Network Printers



Specification		LED Printer LP-1010	
Plotter	Imaging Method	Electrophotography (LED Exposure/Dry Type Development(One Component)/OPC Drum)	
	Output Resolution	600 dpi	
	Continuous Output Speed	3.4 E-size prints per min., 6.2 D-size prints per min.	
	Warming-up Time	less than 8 min.	
	Paper Feed	2-rolls, Automatic Feed	
	Paper Ejection	Front Side Ejection	
	Maximum Output Width (*1)	36"	
	Maximum Output Length (*2)	33 feet	
	Margin Sizes	1/8" on right/left side, 1/5" on front side, 1/2" on rear side	
	Maximum Output Area	36 inches x 33 feet	
Controller	RAM (*3)	256MB (Standard)	
	HDD	20 GB	
	Interface	Ethernet (10/100 Base-TX) USB 2.0, Centronics	
	Network Protocol	TCP/IP (ftp, lpr, socket)	
	Data Format	HP-GL, HP-GL/2, HP RTL, TIFF, CALS	
	Logical Port	10	
	Web Function	o	
	Dimensions	Plotter 46" (W) x 22" (D) x 49" (H)	
	Other	Weight	less than 419 lbs. (*4)
		Power Supply	110V Model: 120V-15A, 220V Model: 230V-10A
Power Consumption		Operation: less than 1,350W, Standby: less than 60W	

*1: There may be some limitation of paper type *2: Limited by resolution/memory available *3: Actual capacity is less *4: Without packaging

Standard Accessories

Power Cord, 3 Toner Cartridges, 1 Waste Toner Bottle, Paper Flange (for each roll holder),
Installation CD-ROM (Windows Driver, Plot Share One LT, Manual), User Manual,
Media (Paper: 100' roll, A0/A1/A3 size, 1 each)



Energystar Compliant Product

- Ethernet is a registered trademark of Xerox®
- HP-GL, HP-GL/2, and HP RTL are graphic languages developed by Hewlett-Packard Company.

- All other company names and products names are trademarks or registered trademarks of their respective companies.

- The brochure may be subject to change without prior notice.



Seiko I Infotech Inc.

2060 Wineridge Place, Suite A&B
Escondido, CA 92029
TEL: 760-781-5200
FAX: 760-745-1195

www.seiko-i.com



ISO9001 Certified